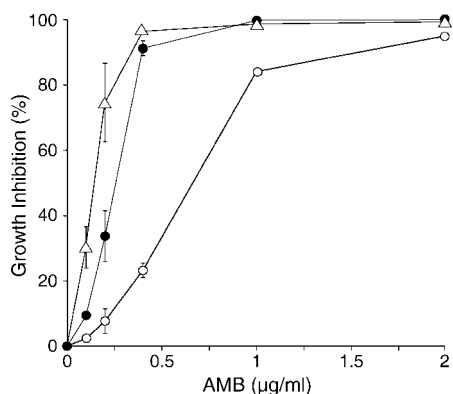
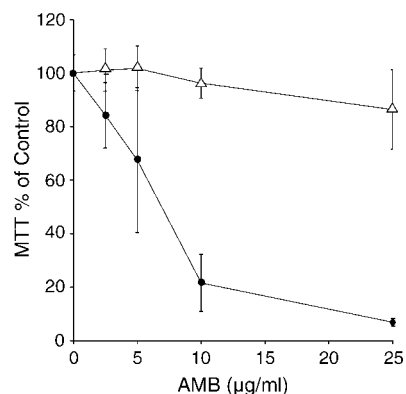


## ERRATA

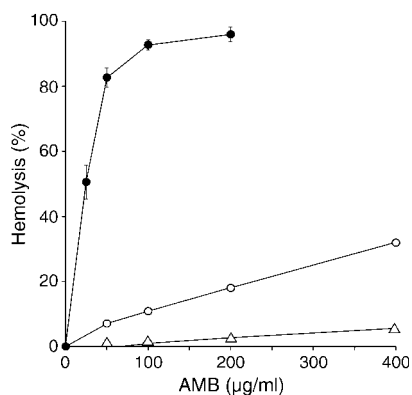
In the article "Reconstituted high-density lipoprotein enriched with the polyene antibiotic, amphotericin B" by Michael N. Oda et al., published in the February 2006 issue of the *Journal of Lipid Research* (Volume 47, pages 260–267), due to a production error Figures 5, 6, 7 and 8 contain symbols that should be closed circles but, instead, appear as open circles. Corrected figures are displayed below.



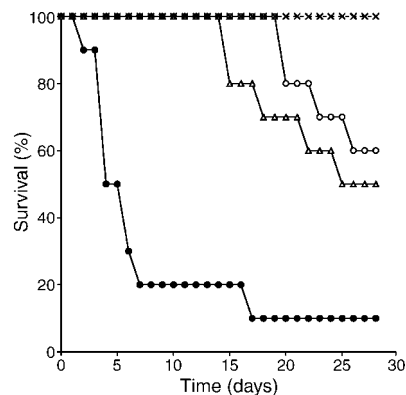
**Fig. 5.** Effect of AMB-rHDL, liposomal AMB, and AMB-deoxycholate on yeast growth. Cultures of *S. cerevisiae* were grown in yeast extract peptone glucose broth medium in the presence of the indicated amounts of different AMB formulations. The cultures were grown for 16 h at 30°C, and the extent of culture growth was determined spectrophotometrically. Open triangles, AMB-rHDL; closed circles, AMB-deoxycholate; open circles, liposomal AMB. Values reported are means  $\pm$  SD ( $n = 3$ ). When not shown, the error bar is smaller than the symbol.



**Fig. 7.** Effect of AMB on the viability of cultured HepG2 cells. Cultures of HepG2 cells were treated with AMB at concentrations ranging from 0 to 25  $\mu\text{g/ml}$ . After 20 h of further culturing in the presence or absence of antibiotic, cell viability was measured using the 3-(4, 5-dimethylthiazolyl-2)-2, 5-diphenyltetrazolium bromide assay. Percentage cell viability was derived from the difference in absorbance (570 and 630 nm) at each AMB concentration. Open triangles, AMB-rHDL; closed circles, AMB-deoxycholate. Values reported are means  $\pm$  SD of three determinations.



**Fig. 6.** Effect of AMB on red blood cell hemolysis. Fresh human erythrocytes were incubated in the presence of the indicated amounts of AMB-deoxycholate, liposomal AMB, or AMB-rHDL. Reaction tubes were incubated at 37°C for 1 h and centrifuged at 1,000  $g$  for 4 min. An aliquot (200  $\mu\text{l}$ ) of the supernatant was added to wells of a microtiter plate containing 25  $\mu\text{l}$  of Drabkins reagent, and sample absorbance at 540 nm was measured on a Spectramax 340 plate reader. Open triangles, AMB-rHDL; closed circles, AMB-deoxycholate; open circles, liposomal AMB. Values reported are means  $\pm$  SD ( $n = 3$ ). When not shown, the error bar is smaller than the symbol.



**Fig. 8.** Effect of AMB-rHDL on the survival of *C. albicans* infected mice. Female BALB/c mice were inoculated with  $5 \times 10^5$  blastospores of *C. albicans*. Two hours after inoculation and once per day for 5 consecutive days, mice were treated with PBS (closed circles) or 0.25 (open circles), 0.5 (open triangles), or 1.0 or 2.5 (crosses)  $\text{mg/kg}$  AMB-rHDL. Survival was monitored over the course of a 28 day observation period.